

EVIO Labs Medford (pka Kenevir Research)
 540 East Vilas Road, Suite F, Central Point, OR 97502
 541-668-7444 / OLCC 010-1001626980D / www.EVIOLabs.com

Elekta 10-5-20

Leilani Farms

Info Only



Confident Cannabis ID: 2010KR0034.5201

Sample ID: M201582-01

Matrix: Hemp

METRC Batch #:

Sampling Method/SOP: Client

Date Sampled: NA

Date Accepted: 10/05/20

Harvest/Process Lot ID:

Batch ID:

Batch Size (g):

Unit for Sale:

Harvest/Production Date:

Cannabinoid Analysis

FOR INFORMATIONAL USE ONLY - NOT FOR REGULATORY PURPOSES

Date/Time Extracted: 10/06/20 09:38

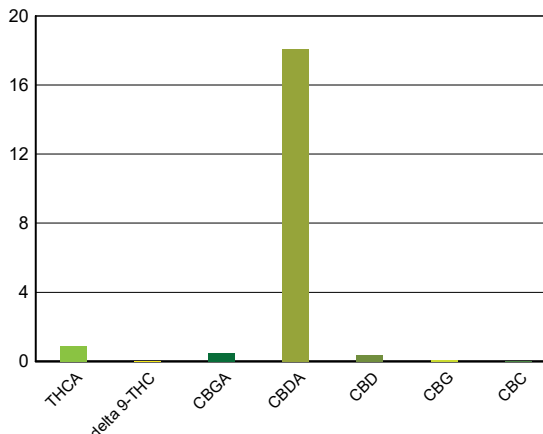
Analysis Method/SOP: SOP.T.40.020

Date/Time Analyzed: 10/07/20 03:00

Cannabinoids	LOQ(%)	mg/g	% weight	Cannabinoid Profile
--------------	--------	------	----------	---------------------

Total THC ((THCA*0.877)+Δ9THC)		7.93	0.793	
Total CBD ((CBDA*0.877)+CBD)		162.29	16.229	

THCA	0.0400	9.04	0.904
delta 9-THC	0.0400	< LOQ	< LOQ
delta 8-THC	0.0400	< LOQ	< LOQ
THCV	0.0400	< LOQ	< LOQ
CBGA	0.0400	4.92	0.492
CBDA	0.0400	181.00	18.1
CBD	0.0400	3.55	0.355
CBDV	0.0400	< LOQ	< LOQ
CBN	0.0400	< LOQ	< LOQ
CBG	0.0400	0.60	0.0597
CBC	0.0400	< LOQ	< LOQ
THCV-A	0.0400	< LOQ	< LOQ
CBDV-A	0.0400	0.80	0.0799
CBCA	0.0400	8.67	0.867
Sum of tested Cannabinoids	0.0400	208.00	20.8



Moisture Content

Date/Time Analyzed: 10/06/20 00:00
 Analysis Method/SOP: SOP.T.40.010

Moisture: 14.4 %

"Total THC" and "Total CBD" are calculated values and are an Oregon reporting requirement (OAR 333-064-0100). For Cannabinoid analysis, only delta 9-THC, THCA, CBD, CBDA are ORELAP accredited analytes. Cannabinoid values reported for plant matter are dry weight corrected; Oregon Water Activity action level is 0.65Aw and Oregon Moisture Content action level is 15%, Samples above limit will be highlighted RED; FD = Field Duplicate; LOQ = Limit of Quantitation.

Stephanie Moon
 Laboratory Director - 10/7/2020

EVIO Labs Medford (pka Kenevir Research)
540 East Vilas Road, Suite F, Central Point, OR 97502
541-668-7444 / OLCC 010-1001626980D / www.EVIOLabs.com

Quality Control

Batch: M20J025 - SOP.T.30.050 Prep for Cannabinoids

Blank(M20J025-BLK1)			Extracted: 10/06/20 09:38		Analyzed: 10/06/20 22:54		
Analyte	Result	LOQ	Recovery Limits	Analyte	Result	LOQ	Recovery Limits
THCA	< LOQ	0.0400 (%)	< LOQ	delta 9-THC	< LOQ	0.0400 (%)	< LOQ
delta 8-THC	< LOQ	0.0400 (%)	< LOQ	THCV-A	< LOQ	0.0400 (%)	< LOQ
THCV	< LOQ	0.0400 (%)	< LOQ	CBDA	< LOQ	0.0400 (%)	< LOQ
CBD	< LOQ	0.0400 (%)	< LOQ	CBDV-A	< LOQ	0.0400 (%)	< LOQ
CBDV	< LOQ	0.0400 (%)	< LOQ	CBG	< LOQ	0.0400 (%)	< LOQ
CBGA	< LOQ	0.0400 (%)	< LOQ	CBN	< LOQ	0.0400 (%)	< LOQ
CBCA	< LOQ	0.0400 (%)	< LOQ	CBC	< LOQ	0.0400 (%)	< LOQ
Sum of tested Cannabinoid:	< LOQ	0.0400 (%)	< LOQ				

LCS(M20J025-BS1)			Extracted: 10/06/20 09:38		Analyzed: 10/06/20 23:11		
Analyte	% Recovery	LOQ	Recovery Limits	Analyte	% Recovery	LOQ	Recovery Limits
THCA	97.9	(%)	70-130	delta 9-THC	98.3	(%)	70-130
THCV	100	(%)	70-130	CBDA	98.6	(%)	70-130
CBD	98.5	(%)	70-130	CBG	98.1	(%)	70-130
CBGA	98.1	(%)	70-130	CBN	104	(%)	70-130
CBCA	104	(%)	70-130	CBC	98.9	(%)	70-130

Batch: M20J026 - SOP.T.40.010 Moisture Content

Blank(M20J026-BLK1)			Extracted: 10/06/20 00:00		Analyzed: 10/06/20 00:00		
Analyte	Result	LOQ	Recovery Limits	Analyte	Result	LOQ	Recovery Limits
Percent Moisture	100	(%)	< LOQ				



Stephanie Moon
 Laboratory Director - 10/7/2020